

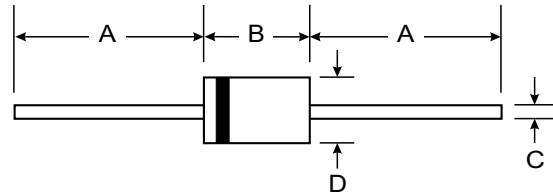
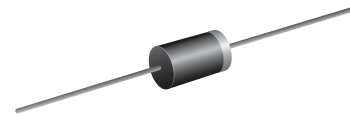
**VOLTAGE RANGE: 400 - 800V**  
**CURRENT: 1.5 A**

### Features

- High current capability
- High surge current capability
- High reliability
- Low reverse current
- Low forward voltage drop
- Fast switching for high efficiency

### Mechanical Data

- Case : DO-201AD Molded plastic
- Epoxy : UL94V-O rate flame retardant
- Lead : Axial lead solderable per MIL-STD-202, Method 208 guaranteed
- Polarity : Color band denotes cathode end
- Mounting position : Any
- Weight : 1.21 grams



DO-201AD		
Dim	Min	Max
A	25.40	—
B	7.20	9.50
C	1.20	1.30
D	4.80	5.30
All Dimensions in mm		

### Maximum Ratings and Electrical Characteristics T<sub>A</sub> = 25°C unless otherwise specified

Single phase, half wave, 60Hz, resistive or inductive load. For capacitive load, derate current by 20%.

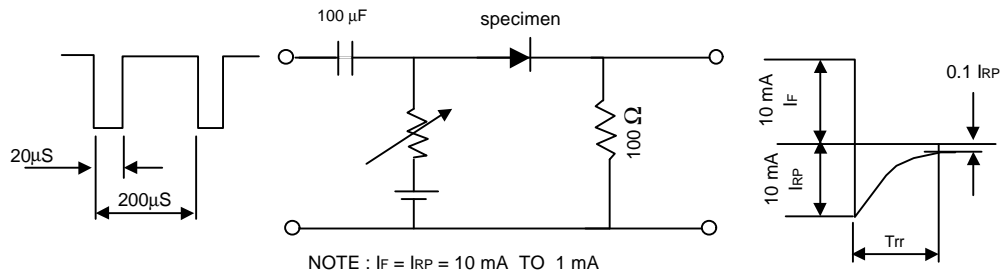
Characteristic	Symbol	RU4	RU4A	RU4B	Unit
Maximum Peak Reverse Voltage	V <sub>RM</sub>	400	600	800	V
Maximum Peak Reverse Surge Voltage	V <sub>RSM</sub>	400	600	800	V
Maximum Average Forward Current <small>T<sub>a</sub> = 60 °C</small>	I <sub>F(AV)</sub>	1.5 ( 3.0 With Heatsink )			A
Maximum Peak Forward Surge Current ( 50 Hz, Half-cycle, Sine wave, Single Shot )	I <sub>FSM</sub>	50			A
Maximum Forward Voltage at I <sub>F</sub> = 3 Amps.	V <sub>F</sub>	1.5		1.6	V
Maximum Reverse Current at V <sub>R</sub> = V <sub>RM</sub> <small>T<sub>a</sub> = 25 °C</small>	I <sub>R</sub>	10			μA
Maximum Reverse Current at V <sub>R</sub> = V <sub>RM</sub> <small>T<sub>a</sub> = 100 °C</small>	I <sub>R(H)</sub>	300		500	μA
Maximum Reverse Recovery Time ( Note 1 )	T <sub>rr</sub>	0.4			μs
Junction Temperature Range	T <sub>J</sub>	- 40 to + 150			°C
Storage Temperature Range	T <sub>STG</sub>	- 40 to + 150			°C

#### Notes :

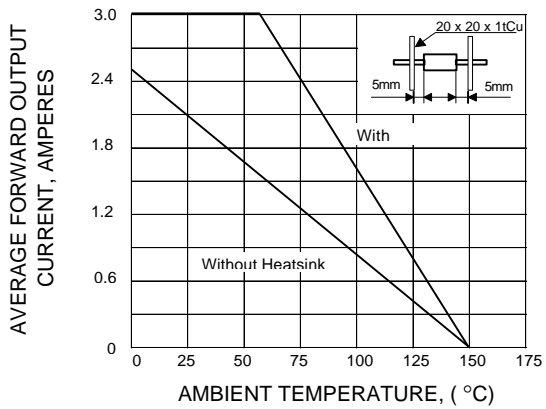
( 1 ) Reverse Recovery Test Conditions : I<sub>F</sub> = 10 mA, I<sub>RP</sub> = 10 mA.

## RATING AND CHARACTERISTIC CURVES ( RU4 - RU4B)

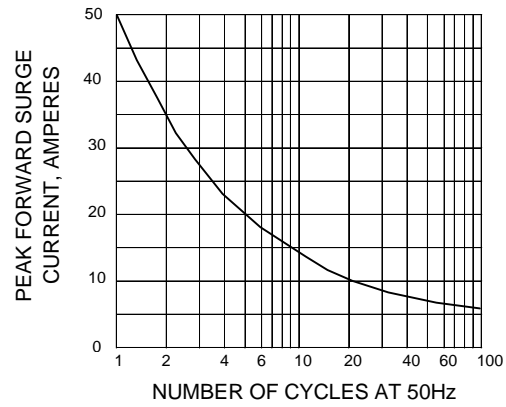
**FIG.1 - REVERSE RECOVERY TIME CHARACTERISTIC AND TEST CIRCUIT DIAGRAM**



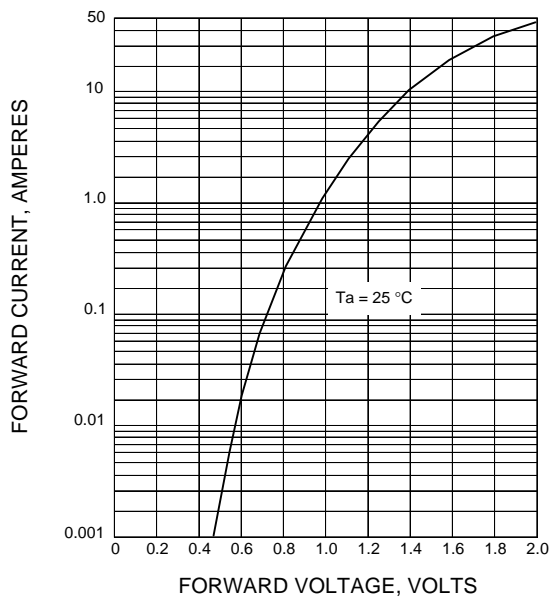
**FIG.2 - DERATING CURVE FOR OUTPUT RECTIFIED CURRENT**



**FIG.3 - MAXIMUM NON-REPETITIVE PEAK FORWARD SURGE CURRENT**



**FIG.4 - TYPICAL FORWARD CHARACTERISTICS**



**FIG.5 - TYPICAL REVERSE CHARACTERISTICS**

