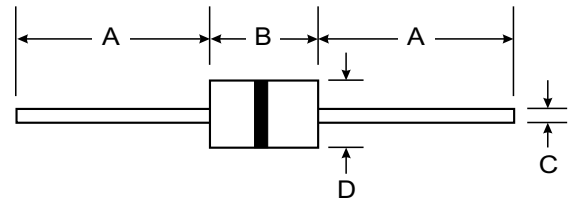


### Features

- Small Capacitance and excellent Insulation Resistance(100MΩ min)
- Small Size, No Polarity, No Dark effect
- Low Electrode Capacitance (1pF Max).
- Quick Response For Electrostatic, Voltage and low limiting voltage
- Stable for repeated discharge test conditions.
- Operating Temperature: -40°C ~ + 85°C
- Storage temperature: -40°C ~ + 125°C

### Application

- For instantaneous over-voltage protection to ADSL, ISDN,
- MODEM, FAX, TEL, Power Supplies , Alarm systems
- For Instantaneous over-voltage protection to RS485, RS232 Port, CATV, Video Transceiver.
- For Instantaneous Over-Voltage Protection Toammeter, Water Meter Auto Admin system, etc



DIP		
Dim	Min	Max
A	2.60	0.3
B	4.30	0.4
C	0.5	0.1
D	28.4	0.5
All Dimensions in mm		

### Electrical Characteristics

Number	DC Spark-Over Voltage Vs(V)		Insulation Resistance		Capacitance of electrostatic	Surge current capacity	Surge Life
	Nominal value	(Min-Max)	Test voltage	IR (MΩ)	1KHz-6V	8/20us	
GS41-141N	140V	(98V-182V)	DC100V	>1000MΩ	1PF(MAX)	1000A	10/700us 4KV 10times
GS41-181N	180V	(126V-234V)					
GS41-201M	200V	(160V-240V)					
GS41-251M	250V	(200V-300V)					
GS41-301M	300V	(240V-360V)					
GS41-401M	400V	(320V-480V)					
GS41-471M	470V	(400V-560V)					
GS41-501M	500V	(400V-600V)	DC250V	>1000MΩ	1PF(MAX)	1000A	10/700us 4KV 10times
GS41-601M	600V	(480V-720V)					
GS41-701M	700V	(560V-840V)					
GS41-801M	800V	(640V-960V)					
GS41-102M	1000V	(800V-1200V)					
GS41-152M	1500V	(1200V-1800V)					



**Part Number Description:**

<b>GS41</b>	<b>301</b>	<b>M</b>	
			DC Spark-Over Voltage Accuracy $\pm 20$
			DC Spark-Over Voltage 300V
			Dimension: Diameter $\phi$ 2.6 Length 4.3mm