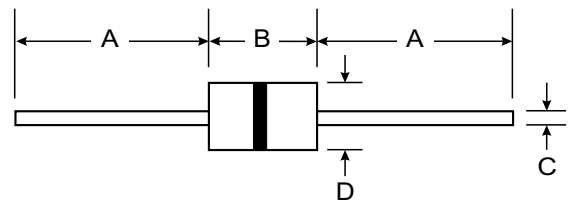


### Features

- Small Capacitance and excellent Insulation Resistance(100MΩ min)
- Small Size, No Polarity. No Dark effect
- Low Electrode Capacitance (1pF Max).
- Quick Response For Electrostatic, Voltage and low limiting voltage
- Stable for repeated discharge test conditions.
- Operating Temperature: -40°C ~ + 85°C
- Storage temperature: -40°C ~ + 125°C

### Application

- For instantaneous over-voltage protection to ADSL, ISDN, MODEM, FAX, TEL, Power Supplies, Alarm systems
- For Instantaneous over-voltage protection to RS485, RS232 Port, CATV, Video Transceiver.
- For Instantaneous Over-Voltage Protection Toammeter, Water Meter Auto Admin system, etc



| DIP                  |      |     |
|----------------------|------|-----|
| Dim                  | Min  | Max |
| A                    | 2.60 | 0.2 |
| B                    | 6.70 | 0.4 |
| C                    | 0.5  | 0.1 |
| D                    | 28.4 | 0.5 |
| All Dimensions in mm |      |     |

### Electrical Characteristics

| Part Number | DC Vs(V) Voltage Spark-Over |             | Insulation Resistance |         | Capacitance of electrostatic | Surge current capacity 8/20us | Surge Life Test |
|-------------|-----------------------------|-------------|-----------------------|---------|------------------------------|-------------------------------|-----------------|
|             | Nominal value               | (Min-Max)   | Test voltage          | IR (MΩ) | 1KHz-6V                      |                               |                 |
| GSE-141N    | 140V                        | (98V-182V)  | DC100V                | >1000MΩ | 1PF(Max)                     | 1000A                         | 8/20us          |
| GSE-181N    | 180V                        | (126V-234V) |                       |         |                              |                               |                 |
| GSE-201M    | 200V                        | (160V-240V) |                       |         |                              |                               |                 |
| GSE-251M    | 250V                        | (200V-300V) |                       |         |                              |                               |                 |
| GSE-301M    | 300V                        | (240V-360V) |                       |         |                              |                               |                 |
| GSE-401M    | 400V                        | (320V-480V) | DC250V                | >1000MΩ |                              |                               | 100A            |
| GSE-501M    | 500V                        | (400V-600V) |                       |         |                              |                               | 300times        |



| Part Number | Colour Code 1 | Colour Code 2 | Colour Code 3 |
|-------------|---------------|---------------|---------------|
| GSE-301M    | Orange        | Red           | Red           |
| GSE-501M    | Green         | ----          | ---           |

