

GRF-2006 SERIES GAS DISCHARGE TUBES

GDT introduction: Gas discharge tubes (GDT) use noble gasses enclosed in ceramic tubes to provide an alternate circuit path for voltage spikes. The ceramic envelope and with nickel connectors allow for high loads and Ruilon offers products that function at 20KA, 40KA, 50KA, 60KA, 100KA & 150KA. The breakdown voltages of the devices have a wide range (up to 20% tolerance). Major applications are high frequency telecommunication lines, stations, security systems, HID and high quality Surge Protection Devices (SPD).

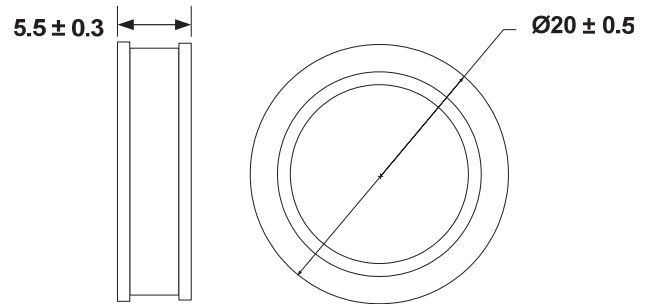


Features

- Rugged ceramic-metal construction
- DC spark-over voltage: 300~800V
- Low capacitance
- Agency recognition : UL/cUL
- Operating temperature : -30°C ~ +85°C
- Storage temperature: -40°C ~ +115°C

Applications

- Power supplier
- Industrial equipment
- SPD Module



Part Number Code

S	T	3	0	0	F	-	2	0	0	6
↓		↓			↓	↓				
Series		DC spark-over voltage			40KA	Dimension				



Part No.	DC Spark-over Voltage	Maximum Impulse Breakdown Voltage		Max. Impulse Discharge Current (8/20 μ s)		Impulse Life (10/1000 μ s)	Normal Alternating Discharge Current		Minimum Insulation Resistance	Maximum Capacitance (1MHz)
	100V/S	100V/ μ S	1KV/ μ s	1 times	10 times	300 A	50Hz 1Sec	Single 9 Cycles		
	(V)	(V)	(V)	(KA)		Times	(A)			
GR300F-2006	300 \pm 20%	600	700	60	40	300	40	80	1	5
GR350F-2006	350 \pm 20%	700	800	60	40	300	40	80	1	5
GR400F-2006	400 \pm 20%	750	850	60	40	300	40	80	1	5
GR420F-2006	420 \pm 20%	750	850	60	40	300	40	80	1	5
GR470F-2006	470 \pm 20%	800	900	60	40	300	40	80	1	5
GR600F-2006	600 \pm 20%	900	1000	60	40	300	40	80	1	5
GR800F-2006	800 \pm 20%	1100	1200	60	40	300	40	80	1	5

DC Spark-over Voltage	DC Measuring Voltage
300-400V	180V
420-800V	250V