

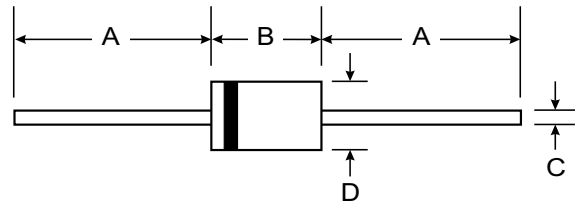
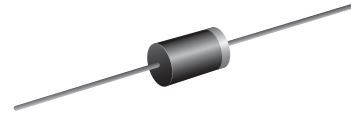
VOLTAGE RANGE: 200 - 800V
CURRENT: 1.0 A

Features

- High current capability
- High surge current capability
- High reliability
- Low reverse current
- Low forward voltage drop
- Fast switching for high efficiency

Mechanical Data

- Case : DO-15 Molded plastic
- Epoxy : UL94V-O rate flame retardant
- Lead : Axial lead solderable per MIL-STD-202, Method 208 guaranteed
- Polarity : Color band denotes cathode end
- Mounting position : Any
- Weight : 0.465 gram



DO-15		
Dim	Min	Max
A	25.40	—
B	5.50	7.62
C	0.686	0.889
D	2.60	3.60
All Dimensions in mm		

Maximum Ratings and Electrical Characteristics T_A = 25°C unless otherwise specified

Single phase, half wave, 60Hz, resistive or inductive load. For capacitive load, derate current by 20%.

Characteristic	Symbol	RU2Z	RU2	RU2B	Unit
Maximum Peak Reverse Voltage	V _{RM}	200	600	800	V
Maximum Peak Reverse Surge Voltage	V _{RSM}	250	650	850	V
Maximum Average Forward Current <small>T_a = 50 °C</small>	I _{F(AV)}	1.0			A
Maximum Peak Forward Surge Current (50 Hz, Half-cycle, Sine wave, Single Shot)	I _{FSM}	20			A
Maximum Forward Voltage at I _F = 1 Amp.	V _F	1.5			V
Maximum Reverse Current at V _R = V _{RM} <small>T_a = 25 °C</small>	I _R	10			μA
Maximum Reverse Current at V _R = V _{RM} <small>T_a = 100 °C</small>	I _{R(H)}	300			μA
Maximum Reverse Recovery Time (Note 1)	T _{rr}	400			ns
Junction Temperature Range	T _J	- 40 to + 150			°C
Storage Temperature Range	T _{STG}	- 40 to + 150			°C

Notes :

(1) Reverse Recovery Test Conditions : I_F = 10 mA, I_{RP} = 10 mA.

RATING AND CHARACTERISTIC CURVES (RU2Z - RU2B)

FIG.1 - REVERSE RECOVERY TIME CHARACTERISTIC AND TEST CIRCUIT DIAGRAM

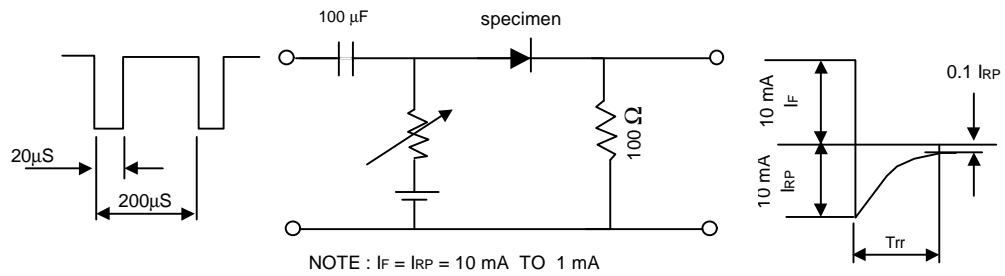


FIG.2 - DERATING CURVE FOR OUTPUT RECTIFIED CURRENT

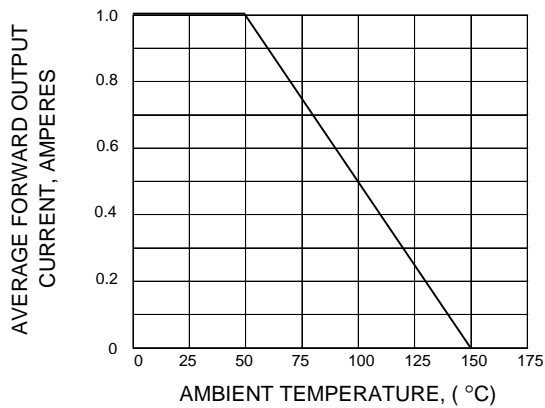


FIG.3 - MAXIMUM NON-REPETITIVE PEAK FORWARD SURGE CURRENT

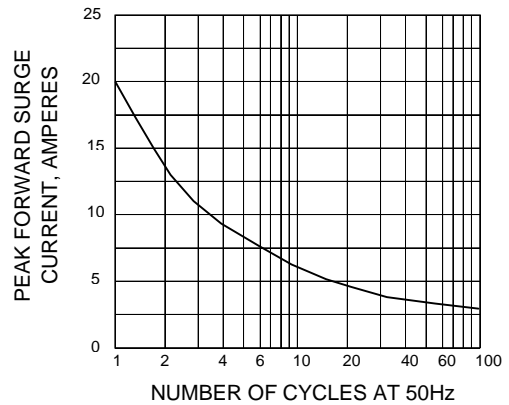


FIG.4 - TYPICAL FORWARD CHARACTERISTICS

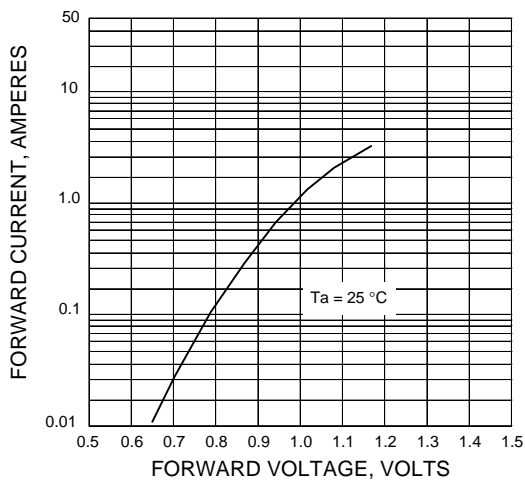


FIG.5 - TYPICAL REVERSE CHARACTERISTICS

