

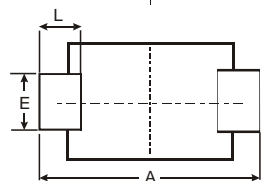
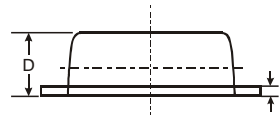
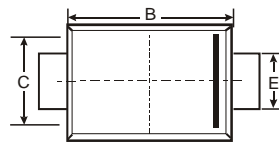
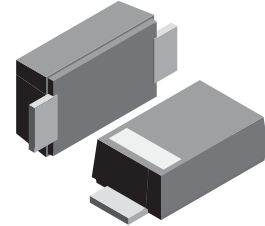
VOLTAGE RANGE: 150 - 200V
CURRENT: 2.0 A

Features

- Schottky Barrier Chip
- Ideally Suited for Automatic Assembly
- Low Power Loss, High Efficiency
- For Use in Low Voltage Application
- Guard Ring Die Construction
- Plastic Case Material has UL Flammability Classification Rating 94V-O

Mechanical Data

- Case:SMBF , Molded Plastic
- Terminals: Solder Plated, Solderable per MIL-STD-750, Method 2026
- Polarity: Cathode Band or Cathode Notch
- Marking: Type Number
- Weight: 0.0018 ounces,0.05grams



| SMBF | | | |
|----------------------|-------|-------|------|
| Dim | Min | Max | Typ |
| A | 5.45 | 5.55 | 5.50 |
| B | 4.27 | 4.33 | 4.30 |
| C | 3.57 | 3.63 | 3.60 |
| D | 1.32 | 1.38 | 1.35 |
| E | 1.96 | 2.00 | 1.98 |
| H | 0.019 | 0.021 | 0.20 |
| L | 0.73 | 0.77 | 0.75 |
| All Dimensions in mm | | | |

Maximum Ratings and Electrical Characteristics $T_A = 25^\circ\text{C}$ unless otherwise specified

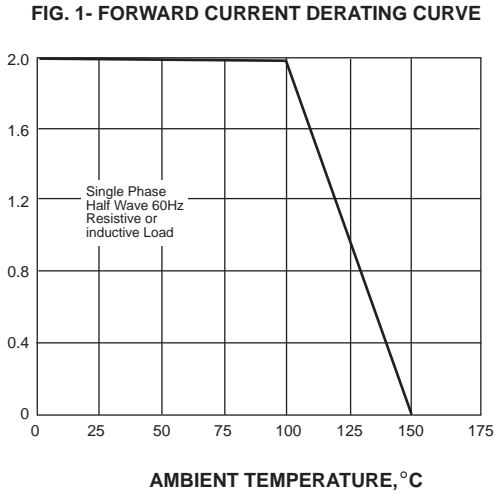
Single phase, half wave, 60Hz, resistive or inductive load. For capacitive load, derate current by 20%.

| Characteristic | Symbol | SK2150F | SK2200F | Unit |
|---|-----------------|-------------|---------|---------------------------|
| Maximum repetitive peak reverse voltage | V_{RRM} | 150 | 200 | VOLTS |
| Maximum RMS voltage | V_{RMS} | 105 | 140 | VOLTS |
| Maximum DC blocking voltage | V_{DC} | 150 | 200 | VOLTS |
| Maximum average forward rectified current 0.375" (9.5mm) lead length(see fig.1) | $I_{(AV)}$ | 2.0 | | Amps |
| Peak forward surge current 8.3ms single half sine-wave superimposed on rated load (JEDEC Method) | I_{FSM} | 50.0 | | Amps |
| Maximum instantaneous forward voltage at 2.0A | V_F | 0.85 | 0.95 | Volts |
| Maximum DC reverse current $T_A=25^\circ\text{C}$ at rated DC blocking voltage $T_A=100^\circ\text{C}$ | I_R | 0.2 | 2.0 | mA |
| Typical junction capacitance (NOTE 1) | C_J | 80 | | pF |
| Typical thermal resistance (NOTE 2) | $R_{\theta JA}$ | 88 | | $^\circ\text{C}/\text{W}$ |
| Operating junction temperature range | T_J | -65 to +150 | | $^\circ\text{C}$ |
| Storage temperature range | T_{STG} | -65 to +150 | | $^\circ\text{C}$ |

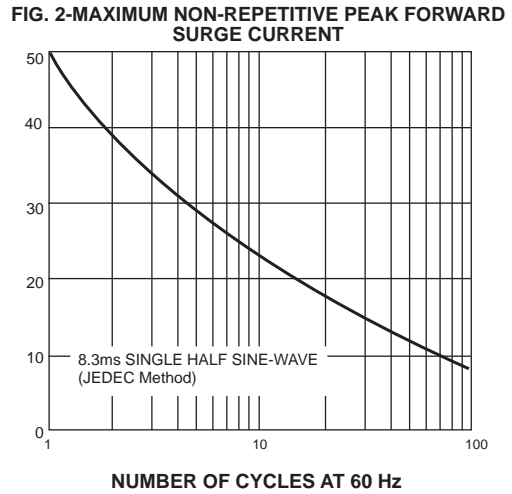
Note: 1. Measured at 1MHz and applied reverse voltage of 4.0V D.C.
 2. P.C.B. mounted with 0.2x0.2" (5.0x5.0mm) copper pad areas

RATINGS AND CHARACTERISTIC CURVES SK2150F THRU SK2200F

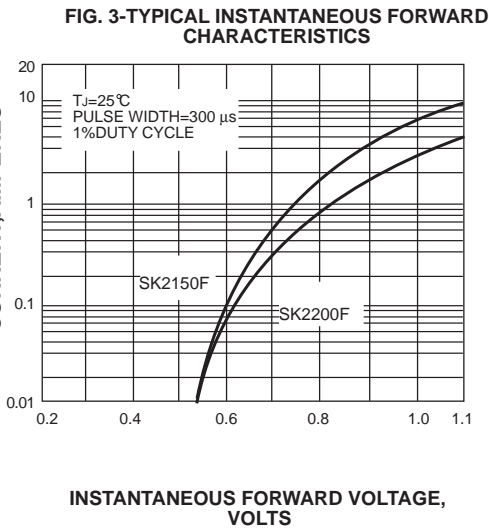
AVERAGE FORWARD RECTIFIED CURRENT, AMPERES



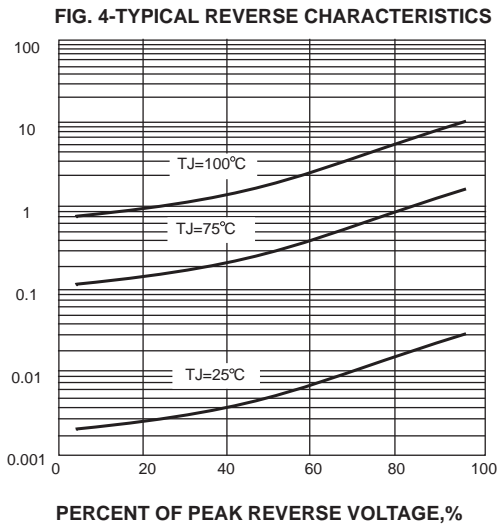
PEAK FORWARD SURGE CURRENT, AMPERES



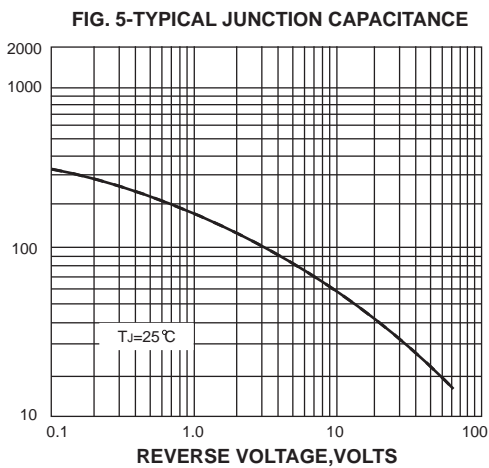
INSTANTANEOUS FORWARD CURRENT, AMPERES



INSTANTANEOUS REVERSE CURRENT, MILLIAMPERES



JUNCTION CAPACITANCE, pF



TRANSIENT THERMAL IMPEDANCE, $^{\circ}\text{C}/\text{W}$

