

VOLTAGE RANGE: 3.3 - 200V

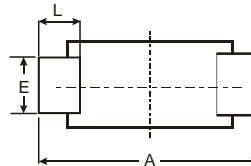
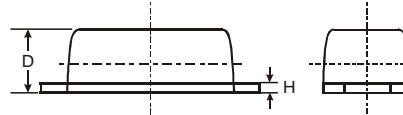
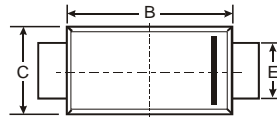
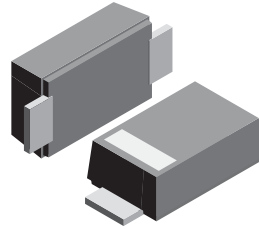
POWER: 1.0Watts

Features

- High peak reverse power dissipation
- High reliability
- Low leakage current

Mechanical Data

- Case: SOD-123FL
plastic body over passivated junction
- Terminals : Plated axial leads,
- solderable per MIL-STD-750, Method 2026
- Polarity : Color band denotes cathode end
- Mounting Position : Any
- Weight: 0.0007 ounce, 0.02 grams



SOD-123FL			
Dim	Min	Max	Typ
A	3.58	3.72	3.65
B	2.72	2.78	2.75
C	1.77	1.83	1.80
D	1.02	1.08	1.05
E	0.097	1.03	1.00
H	0.13	0.17	0.15
L	0.53	0.57	0.55
All Dimensions in mm			

Maximum Ratings $T_A = 25^\circ\text{C}$ unless otherwise specified

Rating	Symbol	Value	Unit
DC Power Dissipation at $T_L = 50^\circ\text{C}$ (Note1)	P_D	1.0	Watt
Maximum Forward Voltage at $I_F = 200\text{ mA}$	V_F	1.2	Volts
Maximum Thermal Resistance Junction to Ambient Air (Note2)	$R_{\theta JA}$	170	K / W
Junction Temperature Range	T_J	- 55 to + 175	$^\circ\text{C}$
Storage Temperature Range	T_S	- 55 to + 175	$^\circ\text{C}$

Note :

- (1) T_L = Lead temperature at 3/8 " (9.5mm) from body
- (2) Valid provided that leads are kept at ambient temperature at a distance of 10 mm from case.



ELECTRICAL CHARACTERISTICS Rating at = 25 °C ambient temperature unless otherwise specified

TYPE	Nominal Zener Voltage		Maximum Zener Impedance			Maximum Reverse Leakage Current		Maximum DC Zener Current
	Vz @ IZT	IZT	ZzT @ IZT	Zzk @ IZK	IZK	IR @ VR		IZM
	(V)	(mA)	(Ω)	(Ω)	(mA)	(μA)	(V)	(mA)
DFLZ3V3	3.3	76.0	10	400	1.0	100	1.0	276
DFLZ3V6	3.6	69.0	10	400	1.0	100	1.0	252
DFLZ3V9	3.9	64.0	9.0	400	1.0	50	1.0	234
DFLZ4V3	4.3	58.0	9.0	400	1.0	10	1.0	217
DFLZ4V7	4.7	53.0	8.0	500	1.0	10	1.0	193
DFLZ5V1	5.1	49.0	7.0	550	1.0	10	1.0	178
DFLZ5V6	5.6	45.0	5.0	600	1.0	10	2.0	162
DFLZ6V2	6.2	41.0	2.0	700	1.0	10	3.0	146
DFLZ6V8	6.8	37.0	3.5	700	1.0	50	4.0	133
DFLZ7V5	7.5	34.0	4.0	700	0.5	50	5.0	121
DFLZ8V2	8.2	31.0	4.5	700	0.5	50	6.0	110
DFLZ9V1	9.1	28.0	5.0	700	0.5	50	7.0	100
DFLZ10	10	25.0	7.0	700	0.25	50	7.6	91
DFLZ11	11	23.0	8.0	700	0.25	50	8.4	83
DFLZ12	12	21.0	9.0	700	0.25	5.0	9.1	76
DFLZ13	13	19.0	10	700	0.25	5.0	9.9	69
DFLZ15	15	17.0	14	700	0.25	5.0	11.4	61
DFLZ16	16	15.5	16	700	0.25	5.0	12.2	57
DFLZ18	18	14.0	20	750	0.25	5.0	13.7	50
DFLZ20	20	12.5	22	750	0.25	5.0	15.2	45
DFLZ22	22	11.5	23	750	0.25	5.0	16.7	41
DFLZ24	24	10.5	25	750	0.25	5.0	18.2	38
DFLZ27	27	9.5	35	750	0.25	5.0	20.6	34
DFLZ30	30	8.5	40	1000	0.25	5.0	22.8	30
DFLZ33	33	7.5	45	1000	0.25	5.0	25.1	27
DFLZ36	36	7.0	50	1000	0.25	5.0	27.4	25
DFLZ39	39	6.5	60	1000	0.25	5.0	29.7	23
DFLZ43	43	6.0	70	1500	0.25	5.0	32.7	22
DFLZ47	47	5.5	80	1500	0.25	5.0	35.8	19
DFLZ51	51	5.0	95	1500	0.25	5.0	38.8	18
DFLZ56	56	4.5	110	2000	0.25	5.0	42.6	16
DFLZ62	62	4.0	125	2000	0.25	5.0	47.1	14
DFLZ68	68	3.7	150	2000	0.25	5.0	51.7	13
DFLZ75	75	3.3	175	2000	0.25	5.0	56.0	12
DFLZ82	82	3.0	200	3000	0.25	5.0	62.2	11
DFLZ91	91	2.8	250	3000	0.25	5.0	69.2	10
DFLZ100	100	2.5	350	3000	0.25	5.0	76.0	9.0
DFLZ110	110	2.3	450	4000	0.25	5.0	83.6	8.6
DFLZ120	120	2.0	550	4500	0.25	5.0	91.2	7.8
DFLZ130	130	1.9	700	5000	0.25	5.0	98.8	7.0
DFLZ150	150	1.7	1000	6000	0.25	5.0	114.0	6.4
DFLZ160	160	1.6	1100	6500	0.25	5.0	121.6	5.8
DFLZ180	180	1.4	1200	7000	0.25	5.0	136.8	5.2
DFLZ200	200	1.2	1500	8000	0.25	5.0	152.0	4.7